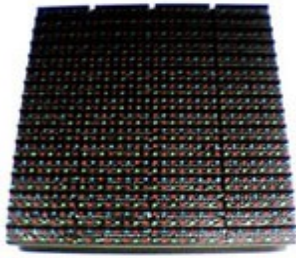
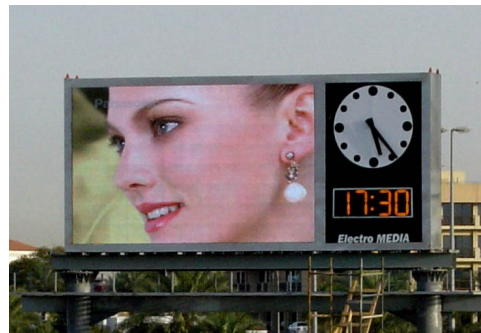


MODEL EV211-20



Front



Back

If you are looking for a high quality / high resolution screen at a reasonable price, this model is for you.

Ideal for small (12m²), medium (30 m²) or even large size (50 m²) advertising billboards or stadium video-scoreboard displays.

Module dimensions (mm)	640 x 640
Clusters or pixels per module	32 x 32 = 1024
Cluster or pixel size (Square)	18 mm
Pitch (Distance between pixel centers)	20 mm
Dots per m ²	2500
Configuration	2R/1G/1B
Color grades (16.77 million)	256R x 256G x 256B
Brightness per cluster (MCD)	2000
Brightness per sq. m. M2 (NITS)	5000
Total LED life (Hours)	100,000
Visible angle (Degree)	150* Horizontal / 100* Vertical
Viewing distance (meters)	15-3000
Video quality	TOP
Video input	PAL, SECAM, NTSC, VGA
Refresh rate	60 frames per second
Operating temperatures (Celsius)	- 25* to +85*
Max. Power per module	300W
Power consumption during operation	150W/H
Weight per module	25 Kg.

REMARKS:

- Modules must be assembled together and fixed on a steel frame to constitute a screen.
- Minimum viewing distance means the distance from where the screen looks dot-free, and maximum is the distance from where the screen light could still be seen during the day.
- Led brightness could be higher if desired. Brightness adjustment is done by automatic sensor.
- Modules constitute the screen's "body". The "brain" is called "Controller" and consists of a special PC.
- Communication is done by data or fiber optic cable, or remotely via high-speed Internet.
- METRIC CONVERSION: 25mm=1" / 1Meter=1.1Yards / 1Kg.=2.2 lbs. / 0°C=32F

Manufactured for Electro MEDIA by Matsushita Electric Co. (Panasonic-Taiwan) LEDs from Toyoda or Nichia (Japan)