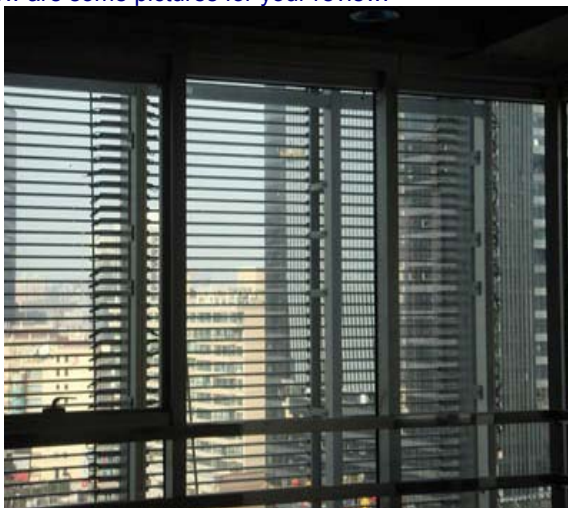
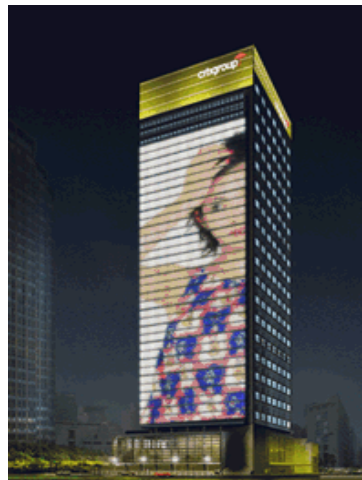




A new trend in building innovation:  
TRANSPARENT LED FASCIA DISPLAYS or LED CURTAINS

We have designed a new product line especially for building fascias, to display variable colors, video and images on a big surface at a reasonable price, making those buildings get out of the crowd and transforming them into an astonishing day or night attraction. This is achieved by placing a series of high intensity LED clusters on aluminum bars on the building fascia, horizontally or vertically. Several pitches are available from 60 to 150mm. Operated by a central PC, building walls can simply perform just like a normal but giant video screen, day and/or night, as you can choose between two brightness, for all day, or night only use, while looking like normal walls during the day. Power consumption is very low, life very long (over 15 years), and maintenance negligible and easy. Installation is also easier and less costly than traditional Led modules cabinets.

Below are some pictures for your review.



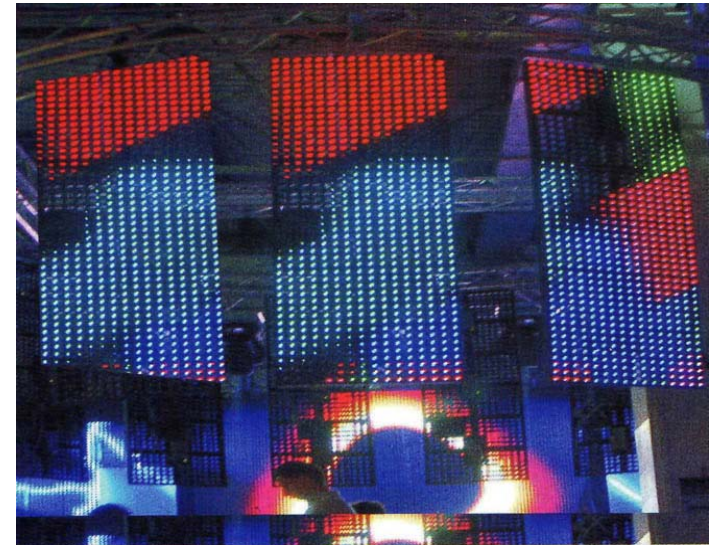
A Led wall is being installed on a facade and showing transparency (Model EVLW-37H)

A Led wall is being installed on a facade and showing transparency (Model EVLW-37H)



## **INDOOR BACKSTAGE LED CURTAINS**



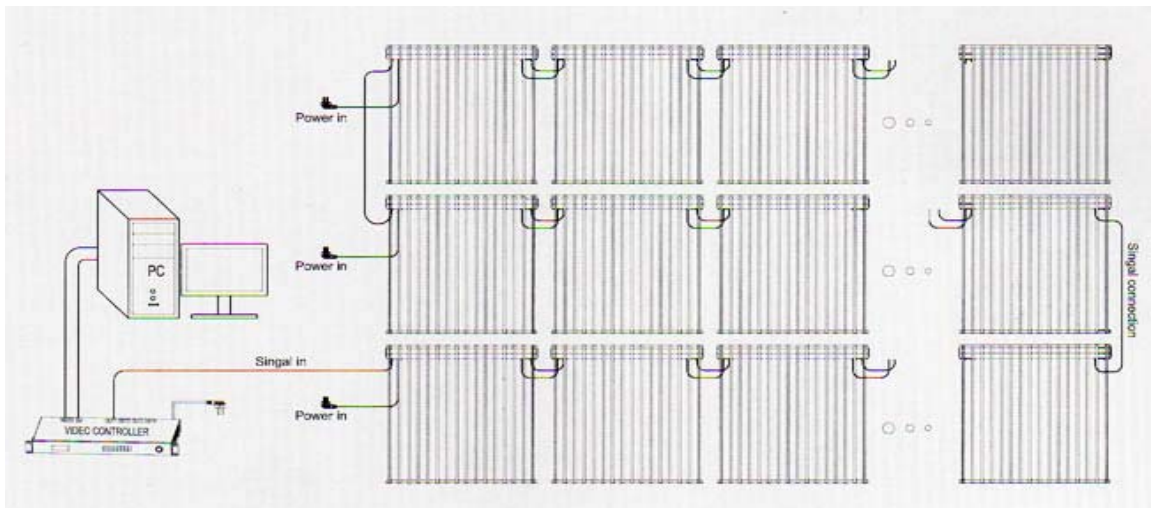


	<b><u>EVLW-18</u></b>	<b><u>EVLW-20</u></b>	<b><u>EVLW-25</u></b>	<b><u>EVLW-37*</u></b>	<b><u>EVLW-50**</u></b>
<b>MODEL&gt;</b>					
Module dim. (mm)	600x600	640x640	800x800	600x120	800x800
Pixels / module	32x32=1024	32x32=1024	32x32=1024	16x32=512	16x16=256
Pitch	18.75 mm	20 mm	25 mm	37.5 mm	50 mm
Configuration	1R/1G/1B	1R/1G/1B	1R/1G/1B	1R/1G/1B	1R/1G/1B
Brightness / sq.m.	5000 Nits	4500 Nits	4000 Nits	2300/7000 Nits	1500 Nits
Total life (Hours)	100,000	100,000	100,000	100,000	100,000
Visible angle	120*V-60*H	120*V-60*H	120*V-60*H	110*V-50*H	110*V-50*H
Viewing distance *	25-1500M	30-1500M	40-1500M	75-1500M	100-1000M
Video quality*	Excellent	Excellent	Very good	Good	Average
Operating Temp. C	-25*/+55*	-25*/+55*	-25*/+55*	-25*/+55*	-25*/+55*
Max. power / module	200 W	200 W	200 W	100 W	50 W
Weight per module	7.5 KG	8 KG	8.5 KG	7 KG	5 KG
Protection Level	IP65 (waterproof)	IP65 (waterproof)	IP65 (waterproof)	IP65 (waterproof)	IP65 (waterproof)

**NOTE:**

- \*Model EVLW- 37 is also available in high brightness (horizontal bars, as featured above model EVLW-37H or Bri-Curtain)
- \*\*Model EVLW- 50 is not well visible during the day and most suitable for indoor applications.
- Pitch means the distance between pixel centers
- Minimum viewing distance means the distance from where a screen looks DOT-FREE, and maximum means the distance from where you can still see screen's illumination during the day.
- Higher or special brightness also available upon request.
- Indoor models are same as outdoors but LESS bright
- Specs. can change for the better without notice due to technology advancements.

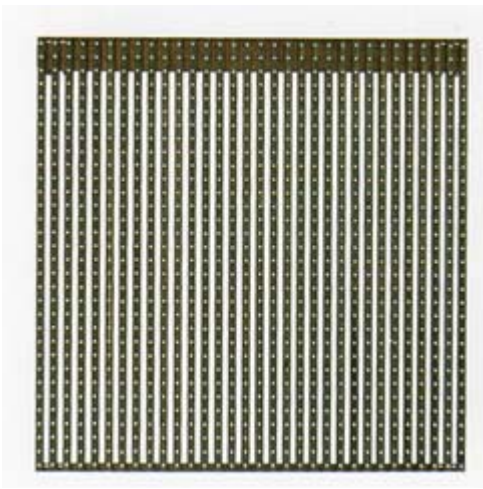
**METRIC CONVERSION:** 30cm=1' / 25mm=1" / 1Meter=1.1Yard / 1Kg=2.2Lbs. / 0°C=32F



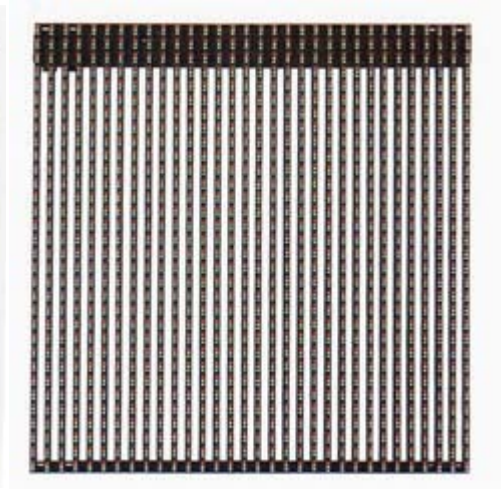
**Connection Diagram**

## Connection Diagram

**MODEL EVLW-18**



**MODEL EVLW-25**



**MODEL EVLW-37**

